



MONTHLY MEMBERSHIP PROGRESS REPORT

District 19 E

Results as of: 06/30/2019

GMT: HOWARD HUDSON

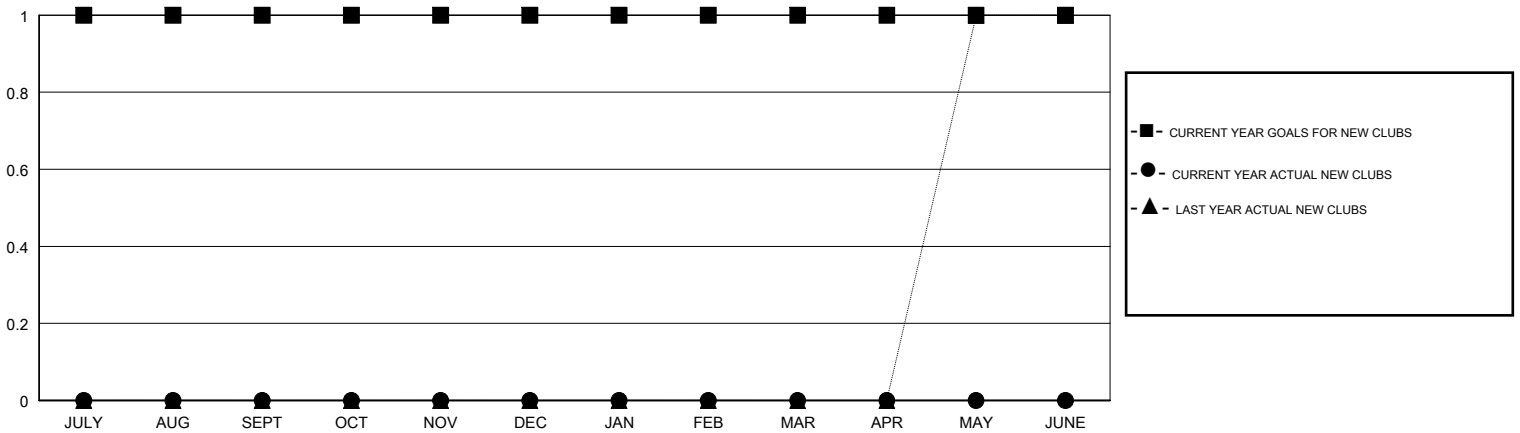
LOCATION WASHINGTON

GMT CA

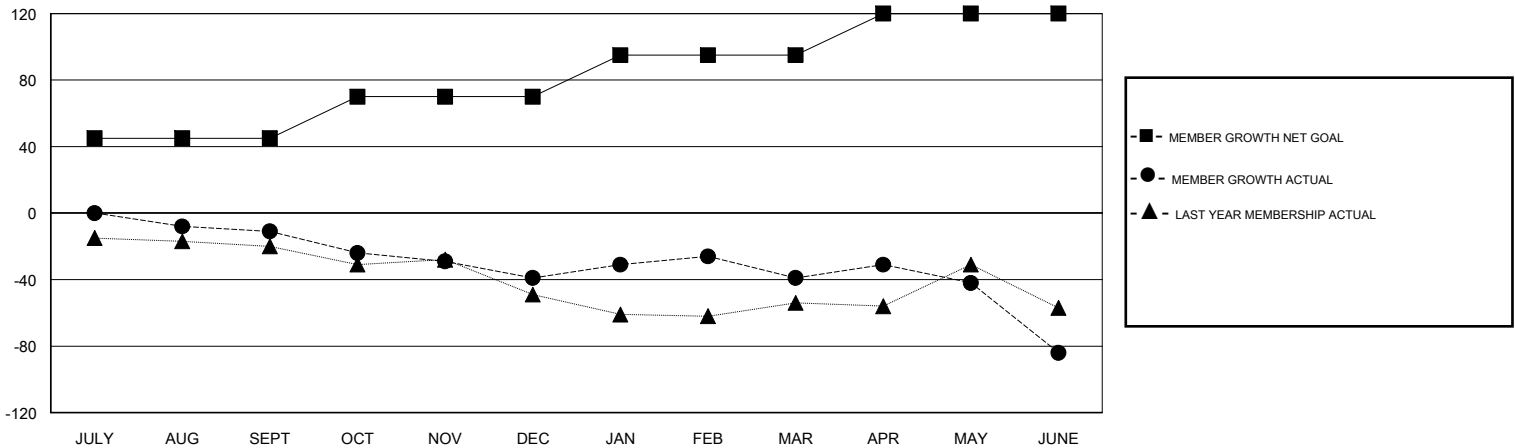
Clubs			
RESULTS FOR 2018-2019			
QUARTER	NEW CLUB GOAL	NEW CLUBS	DROPPED CLUBS
JULY/AUG/SEPT	1	0	0
OCT/NOV/DEC	0	0	0
JAN/FEB/MAR	0	0	2
APR/MAY/JUNE	0	0	0

Members			
RESULTS FOR 2018-2019			
QUARTER	MEMBER GROWTH NET GOAL	MEMBER GROWTH ACTUAL	DROPPED MEMBERS ACTUAL (including transfers)
JULY/AUG/SEPT	45	22	30
OCT/NOV/DEC	25	23	46
JAN/FEB/MAR	25	44	41
APR/MAY/JUNE	25	35	75

GOALS AND ACTUAL NEW CLUBS CUMULATIVE



GOALS AND ACTUAL MEMBERS CUMULATIVE



DROPPED CLUBS: 2

34 CLUBS OF 50 ADDED 1 OR MORE NEW MEMBERS

GENDER DISTRIBUTION	
MALE	826 (64.84%)
FEMALE	448 (35.16%)
Women Percentage Fiscal Year Goal: 35%	

DROPPED MEMBERS	
DECEASED	12
CLUB CANCELLED	13
OTHER	167
TOTAL	192

[CLICK HERE FOR CUMULATIVE MEMBERSHIP DATA](#)

TOTAL FAMILY UNIT MEMBERS	370
FAMILY MEMBERS PAYING HALF DUES	188